

25th Street Station



Presentation to UDARP
October 31th, 2013

Overall Illustrative Plan



Bowman
CONSULTING



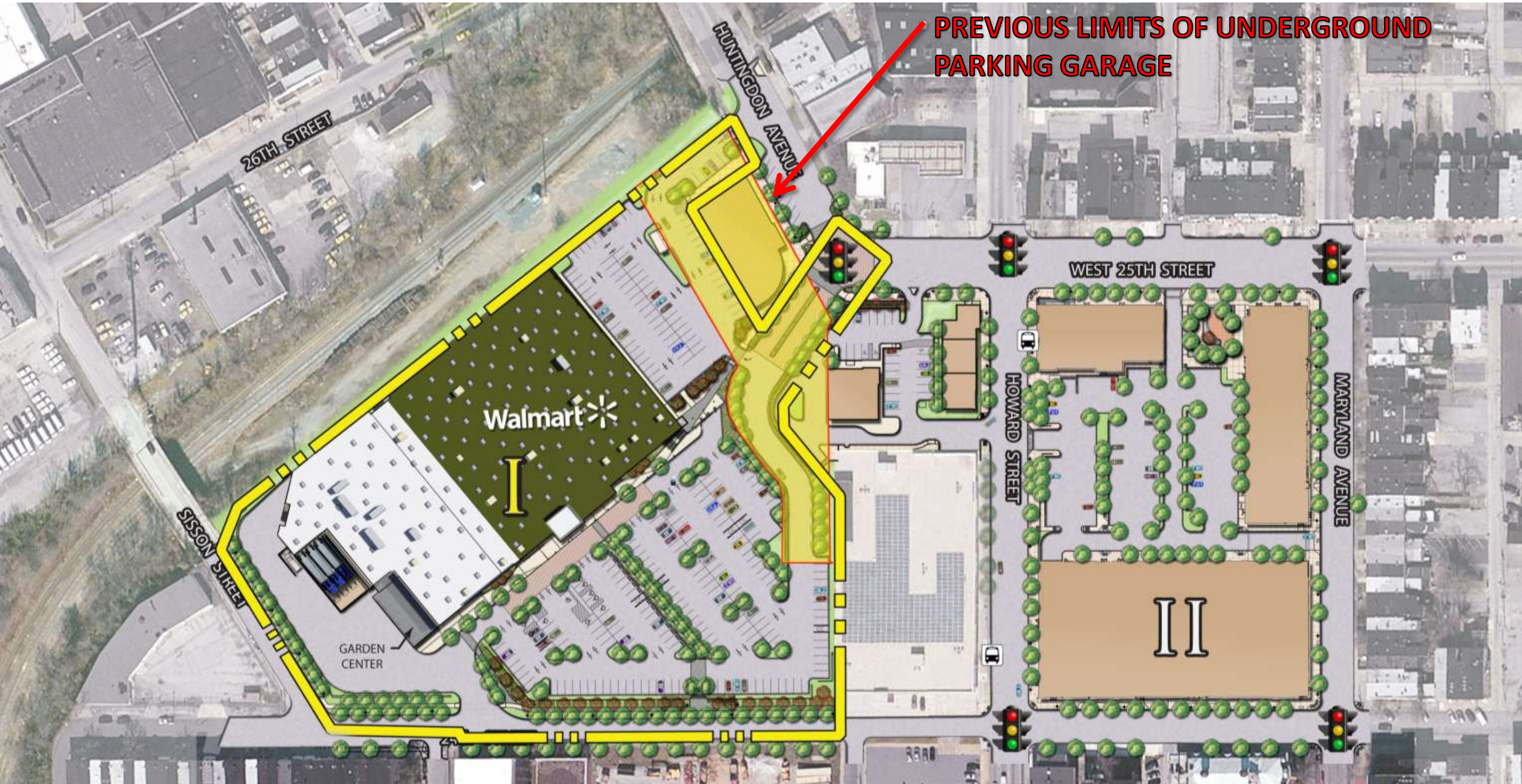
Colbert Matz Rosenfelt, Inc.
Civil Engineers • Surveyors • Planners

25TH STREET STATION

BALTIMORE, MARYLAND



Site I Limits Plan



25TH STREET STATION

BALTIMORE, MARYLAND



Colbert Matz Rosenfelt, Inc.
Civil Engineers • Surveyors • Planners



Pedestrian Circulation Exhibit



25TH STREET STATION

BALTIMORE, MARYLAND



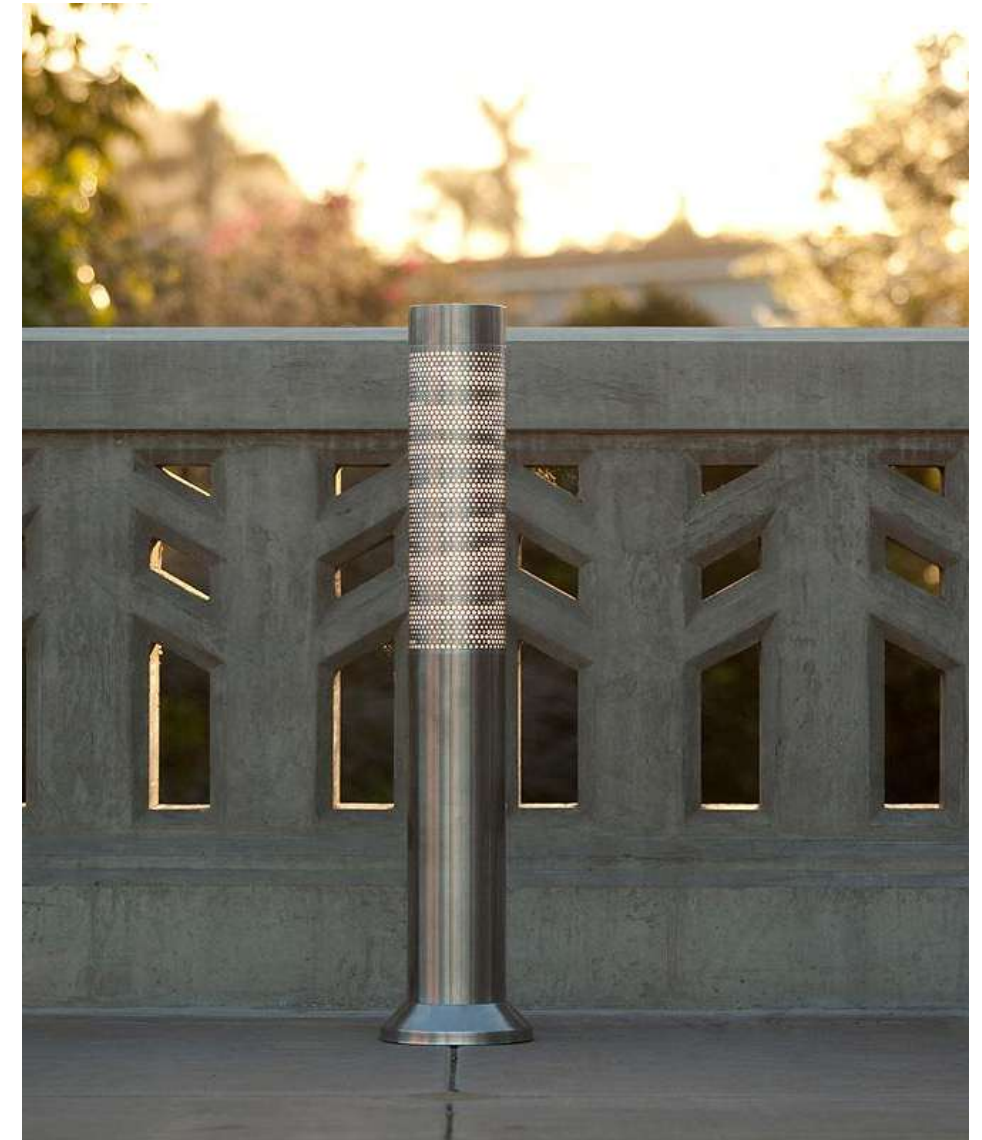
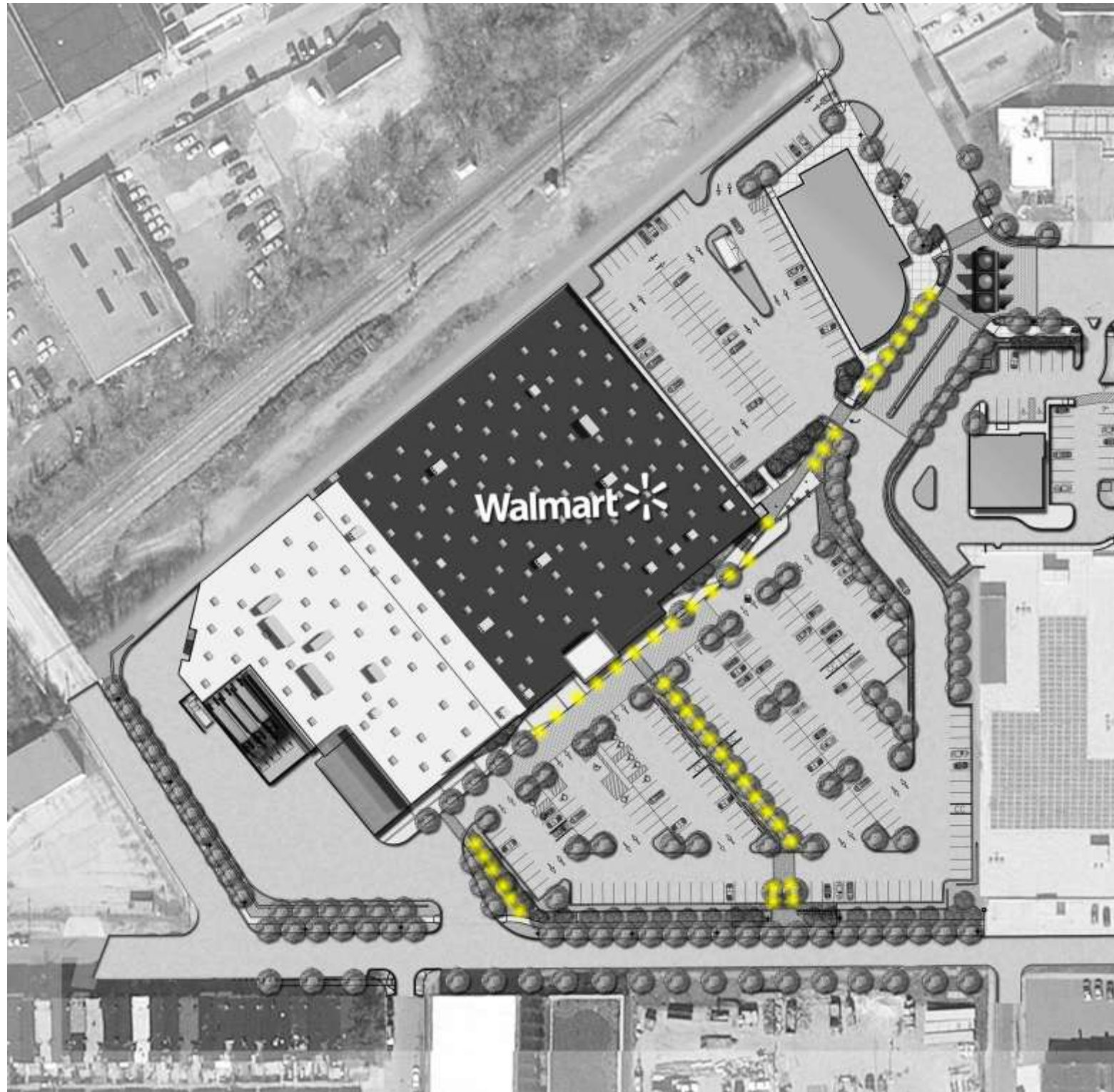
Bowman
CONSULTING



Colbert Matz Rosenfelt, Inc.
Civil Engineers • Surveyors • Planners



Site 1 – Pedestrian/Bollard Circulation Exhibit



Colbert Matz Rosenfelt, Inc.
Civil Engineers • Surveyors • Planners

25TH STREET STATION

BALTIMORE, MARYLAND



Pedestrian Enhancements and Unifying Elements



FLOWERING PERENNIALS



SHRUBS AND HEDGES



PERENNIAL PLANTINGS



SITE FURNISHINGS



ORNAMENTAL TREES

Unifying Elements - Site Furnishing

Public Realm



TRASH RECEPTACLE



PEDESTRIAN LIGHT

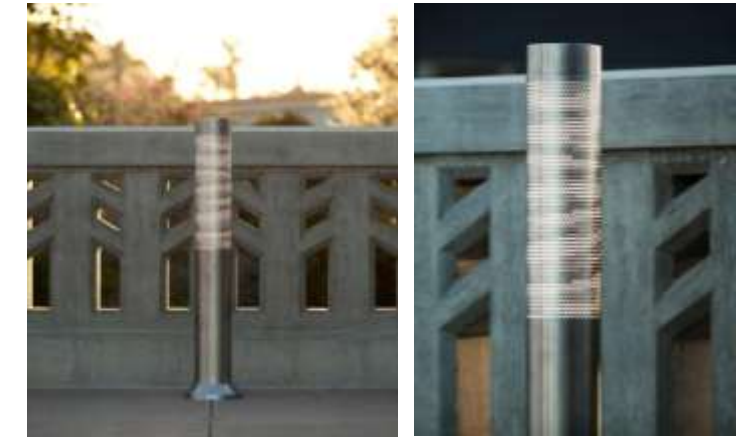


BENCH

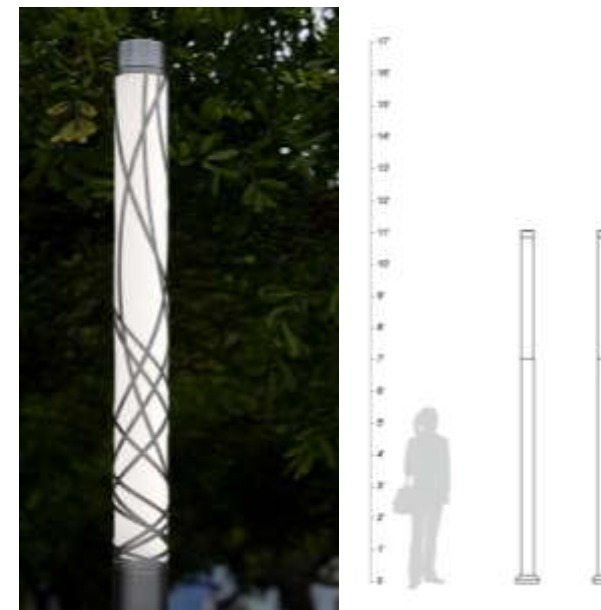
Private (Site 1)



BENCH



BOLLARD LIGHT



LIGHT COLUMN



TRASH RECEPTACLE



BIKE RACK

Unifying Elements – Landscaping and Site Furnishing Public Realm



DAYLILLIES



LAUREL



KOREANSPICE VIBURNUM



WILLOW OAK



REDBUD



BENCH



TRASH RECEPTACLE



AMERICA ELM

Unifying Elements – Landscaping and Site Furnishing Site 1 (Private)



DAYLILLIES



LAUREL



PLANTERS



ORNAMENTAL GRASSES



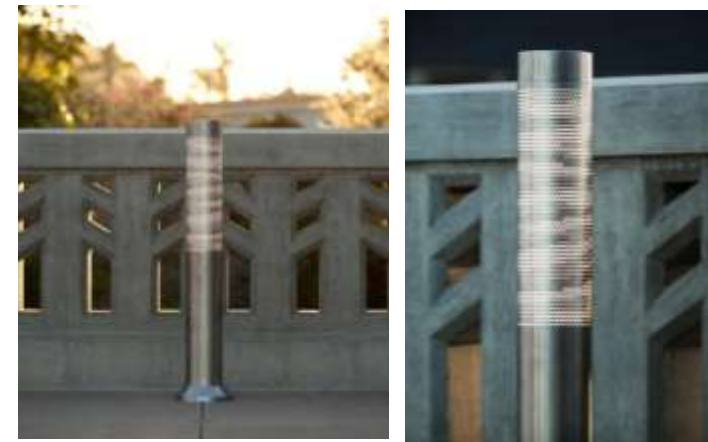
HONEY LOCUST



CRAPE MYTRLE



BENCH



BOLLARD LIGHTING



LONDON PLANE TREE



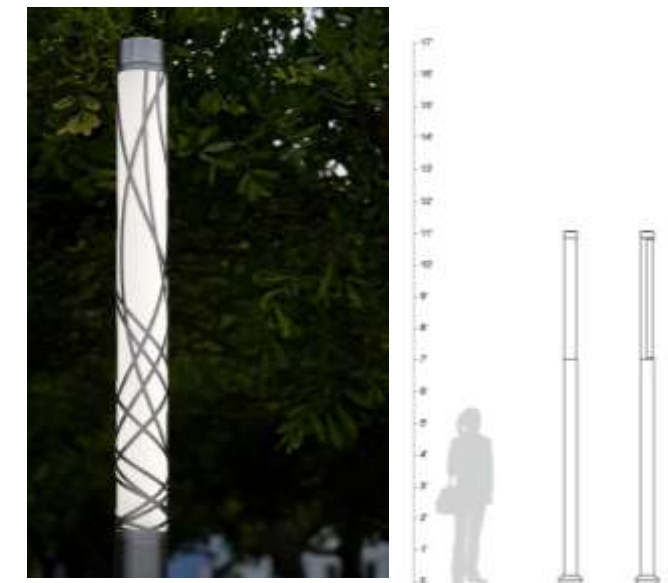
BIKE RACK



FOUNTAIN GRASS w/ BLACK EYED SUSAN



TRASH RECEPTACLE



25TH STREET ENTRANCE LIGHT COLUMN

Pedestrian Enhancement - Area 1



DAYLILLIES



WILLOW OAK



LONDON PLANE TREE BARK



CRAPE MYRTLE



LIGHT COLUMN



BOLLARD LIGHTING



PAVING PATTERN
(Prelim/Subject to DOT Approval)



Bowman
CONSULTING



Colbert Matz Rosenfelt, Inc.
Civil Engineers • Surveyors • Planners

25TH STREET STATION

BALTIMORE, MARYLAND





Bowman
CONSULTING



Colbert Matz Rosenfelt, Inc.
Civil Engineers • Surveyors • Planners

25TH STREET STATION

BALTIMORE, MARYLAND



Pedestrian Enhancement - Area 2



BENCH



CRAPE MYRTLE



PLANTER



BOLLARD



HONEY LOCUST



FOUNTAIN GRASS w/ BLACK EYED SUSAN



BIKE RACK



LONDON PLANE TREE



Colbert Matz Rosenfelt, Inc.
Civil Engineers • Surveyors • Planners

25TH STREET STATION

BALTIMORE, MARYLAND



Walmart 



Bowman
CONSULTING

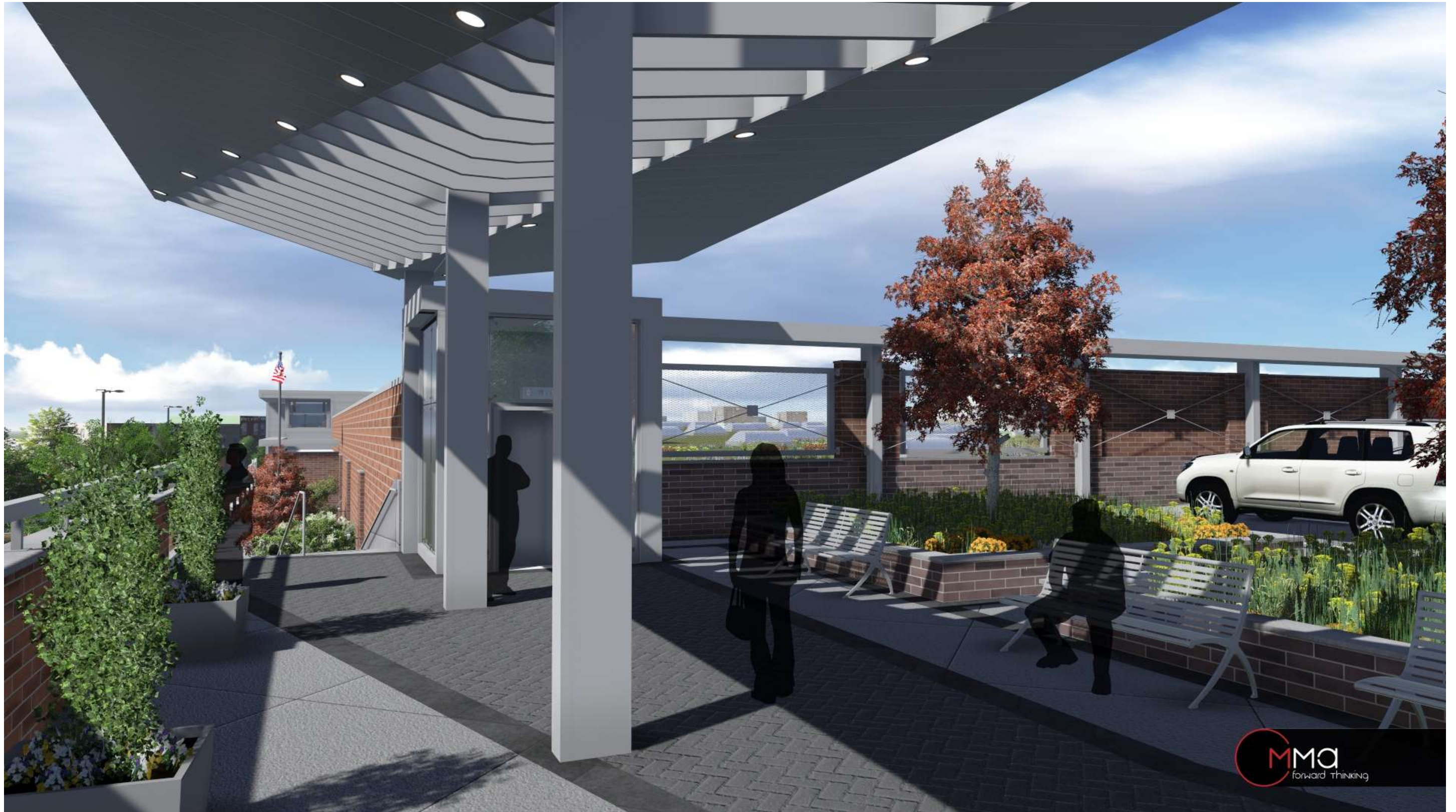


Colbert Matz Rosenfelt, Inc.
Civil Engineers • Surveyors • Planners

25TH STREET STATION

BALTIMORE, MARYLAND





Bowman
CONSULTING



Colbert Matz Rosenfelt, Inc.
Civil Engineers • Surveyors • Planners

25TH STREET STATION

BALTIMORE, MARYLAND





Bowman
CONSULTING



Colbert Matz Rosenfelt, Inc.
Civil Engineers • Surveyors • Planners

25TH STREET STATION

BALTIMORE, MARYLAND





Bowman
CONSULTING



Colbert Matz Rosenfelt, Inc.
Civil Engineers • Surveyors • Planners

25TH STREET STATION

BALTIMORE, MARYLAND





Bowman
CONSULTING



Colbert Matz Rosenfelt, Inc.
Civil Engineers • Surveyors • Planners

25TH STREET STATION

BALTIMORE, MARYLAND



Pedestrian Enhancement - Area 3



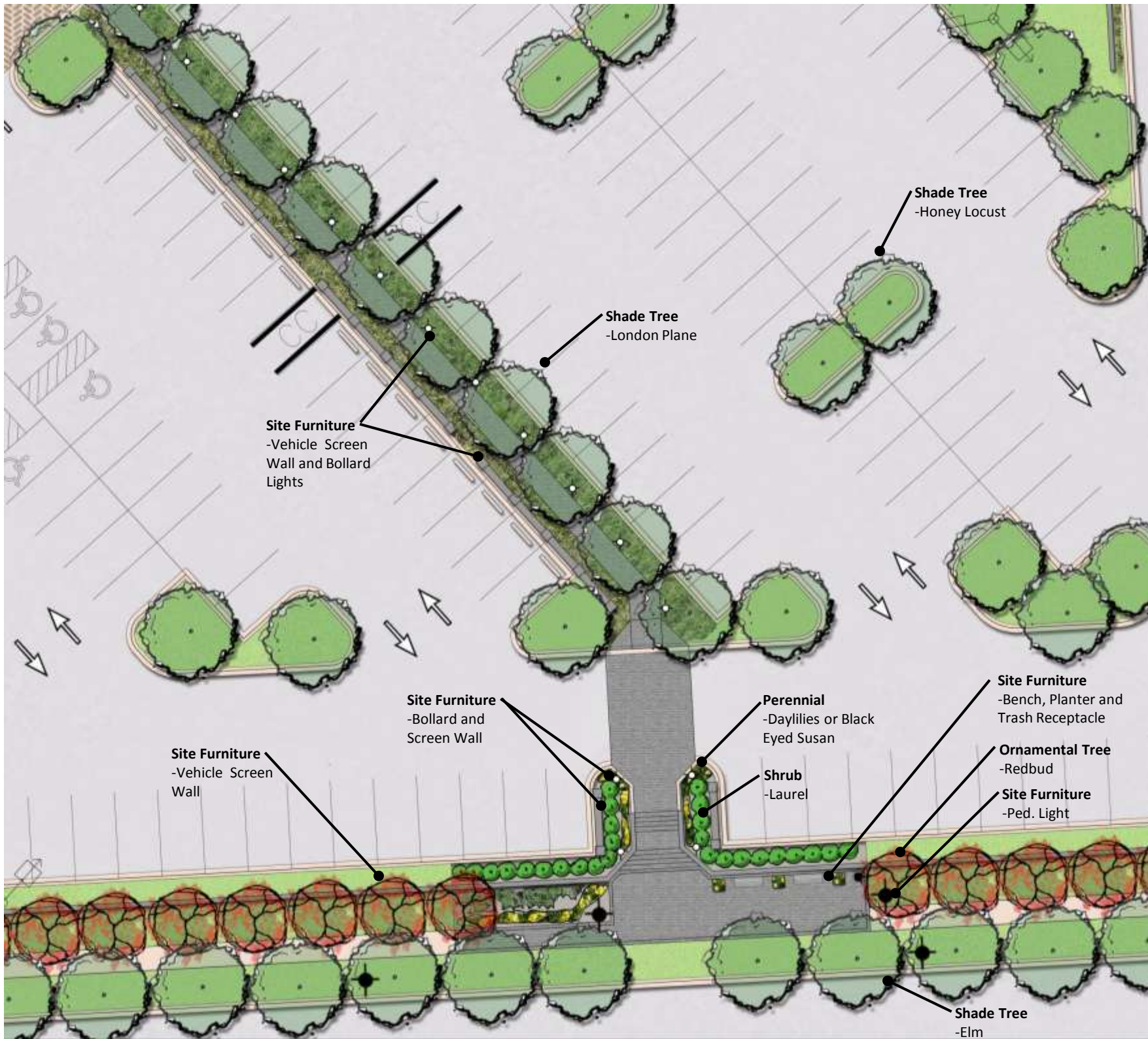
Colbert Matz Rosenfelt, Inc.
Civil Engineers • Surveyors • Planners

25TH STREET STATION

BALTIMORE, MARYLAND



Pedestrian Enhancement - Area 4



BENCH



LAUREL



BOLLARD LIGHT



PEDESTRIAN LIGHT



REDBUD



Bowman
CONSULTING



Colbert Matz Rosenfelt, Inc.
Civil Engineers • Surveyors • Planners

25TH STREET STATION

BALTIMORE, MARYLAND





Colbert Matz Rosenfelt, Inc.
Civil Engineers • Surveyors • Planners

25TH STREET STATION

BALTIMORE, MARYLAND





Bowman
CONSULTING



Colbert Matz Rosenfelt, Inc.
Civil Engineers • Surveyors • Planners

25TH STREET STATION

BALTIMORE, MARYLAND





Bowman
CONSULTING



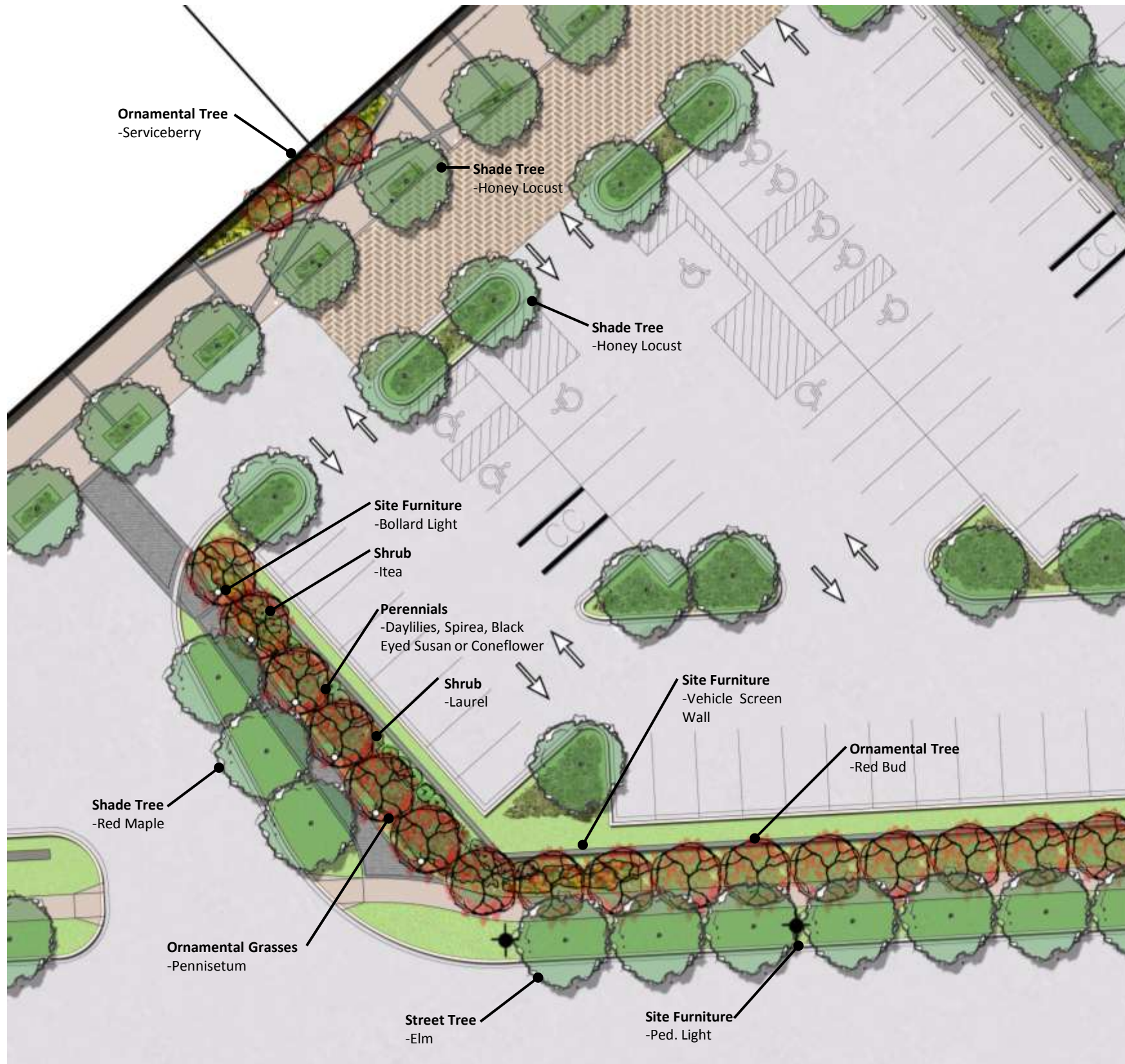
Colbert Matz Rosenfelt, Inc.
Civil Engineers • Surveyors • Planners

25TH STREET STATION

BALTIMORE, MARYLAND



Pedestrian Enhancement - Area 5



ULMUS AMERICANA



DAYLILLIES



PERENNIAL PLANTING



LAUREL



BOLLARD LIGHTS



PEDESTRIAN LIGHT



HONEY LOCUST



Colbert Matz Rosenfelt, Inc.
Civil Engineers • Surveyors • Planners

25TH STREET STATION

BALTIMORE, MARYLAND





Bowman
CONSULTING



Colbert Matz Rosenfelt, Inc.
Civil Engineers • Surveyors • Planners

25TH STREET STATION

BALTIMORE, MARYLAND





Bowman
CONSULTING



Colbert Matz Rosenfelt, Inc.
Civil Engineers • Surveyors • Planners

25TH STREET STATION

BALTIMORE, MARYLAND





Bowman
CONSULTING



Colbert Matz Rosenfelt, Inc.
Civil Engineers • Surveyors • Planners

25TH STREET STATION

BALTIMORE, MARYLAND





Colbert Matz Rosenfelt, Inc.
Civil Engineers • Surveyors • Planners

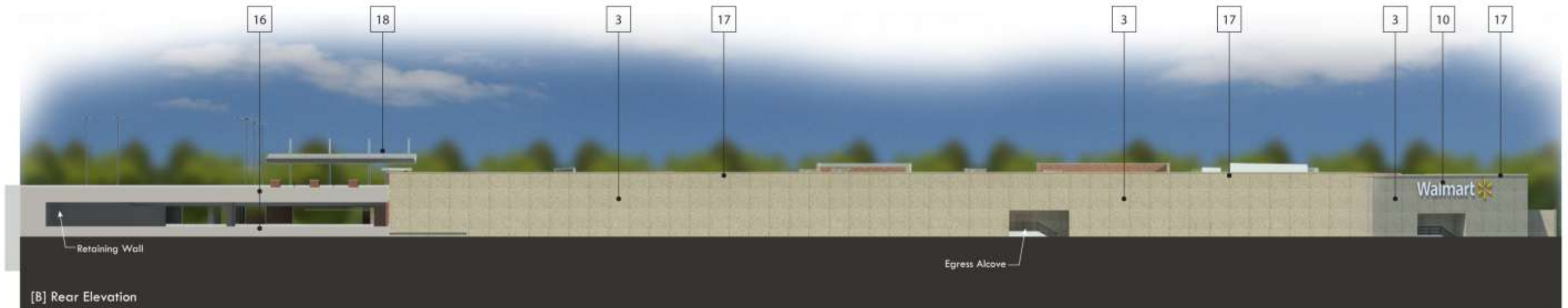
25TH STREET STATION

BALTIMORE, MARYLAND





[A] Front Elevation



[B] Rear Elevation

Elevation Key Notes:

1	Anodized Panel	11	Open Metal Framing System
2	Arch. Block or Arch. Precast Concrete	12	Planter Box
3	Precast Concrete Panel	13	Fiber Cement Panel
4	Glass Storefront System	14	Painted Hollow Metal Door
5	Spandrel Glass Storefront System	15	Aluminum Roll Down Door
6	Metal Awning System	16	Concrete Parking Structure
7	Accent Lighting	17	Painted Metal Coping
8	Ornamental Fence	18	Centria Metal Panel
9	Directional Sign	19	Quik-Brik (Sandlewood)
10	Illuminated Sign	20	Quik-Brik (Marose)
		21	Quik-Brik (Lawson Blend)

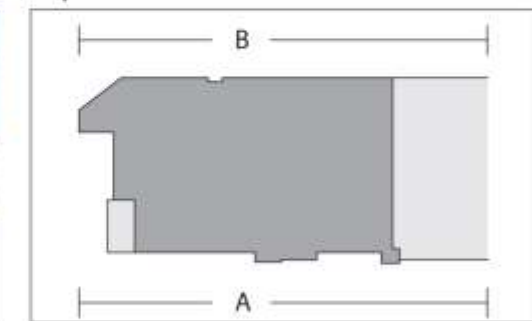
Perspective of Front:



Perspective of Rear:



Key Plan:



Massa Montalto Architects, PC
3297 Route 66 | Neptune, NJ 07753

P: 732.918.2300 | F: 732.918.2351 | www.mma-architects.com
DESIGN REPRESENTATION ONLY NOT FOR CONSTRUCTION
The building images shown are a representation of the current design intent only. The building images may not reflect variations in color, tone, hue, size, shading, ambient light intensity, materials, textures, contrast, font style, construction variations required by building codes or inspectors, material availability or final design detailing.

Elevations [Front & Rear]
25th Street Station Development

25th & Howard St.
Baltimore, MD



A1.1



[C] Right Elevation



[D] Left Elevation

Elevation Key Notes:

1 Anodized Panel	11 Open Metal Framing System
2 Arch. Block or Arch. Precast Concrete	12 Planter Box
3 Precast Concrete Panel	13 Fiber Cement Panel
4 Glass Storefront System	14 Painted Hollow Metal Door
5 Spandrel Glass Storefront System	15 Aluminum Roll Down Door
6 Metal Awning System	16 Concrete Parking Structure
7 Accent Lighting	17 Painted Metal Coping
8 Ornamental Fence	18 Centria Metal Panel
9 Directional Sign	19 Quik-Brik (Sandlewood)
10 Illuminated Sign	20 Quik-Brik (Marose)
	21 Quik-Brik (Lawson Blend)

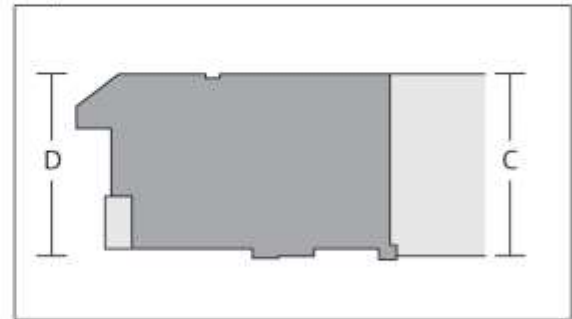
Perspective of Right:



Perspective of Left:



Key Plan:



Massa Montalto Architects, PC
3297 Route 66 | Neptune, NJ 07753

P: 732.918.2300 | F: 732.918.2351 | www.mma-architects.com

DESIGN REPRESENTATION ONLY NOT FOR CONSTRUCTION
The building images shown are a representation of the current design intent only. The building images may not reflect variations in color, tone, hue, tint, shading, ambient light intensity, materials, textures, contrast, form style, construction variations required by building codes or inspectors, material availability or final design detailing.

Elevations [Right & Left]
25th Street Station Development

25th & Howard St.
Baltimore, MD



A1.2



UDARP PRESENTATION - 9.6.13



UDARP PRESENTATION - 10.10.13



UDARP PRESENTATION - 10.31.13



Massa Montalto Architects, PC
3297 Route 66 | Neptune, NJ 07753

P: 732.918.2300 | F: 732.918.2351 | www.mma-architects.com

DESIGN REPRESENTATION ONLY NOT FOR CONSTRUCTION
The building images shown are a representation of the current design intent only. The building images may not reflect variations in color, tone, hue, tint, shading, ambient light intensity, materials, texture, contrast, line style, construction variations required by building codes or inspectors, material availability or final design detailing.

Comparison Elevations
25th Street Station Development

25th & Howard St.
Baltimore, MD



END OF PRESENTATION



Colbert Matz Rosenfelt, Inc.
Civil Engineers • Surveyors • Planners

25TH STREET STATION
BALTIMORE, MARYLAND

